

THURSDAY, MAY 19th, 1938

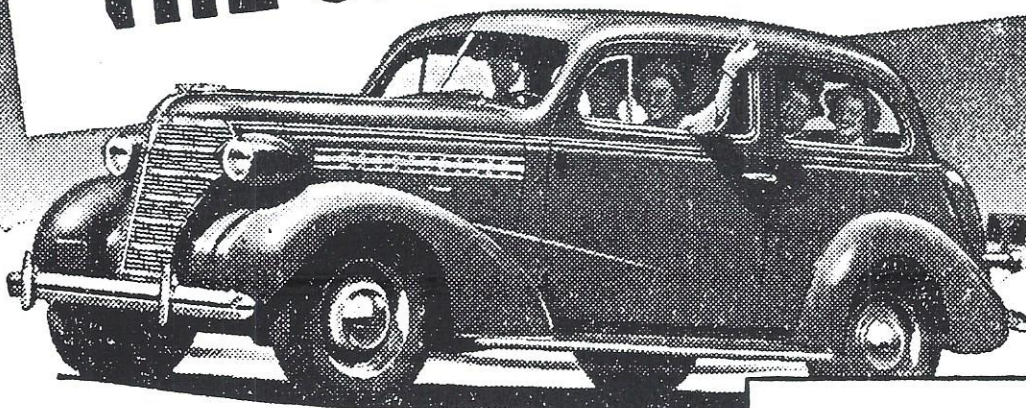
MT. JOY BULLETIN

MOUNT JOY, PA.

J. E. SCHROLL, Editor & Propr.

CHEVROLET

WORLD'S LARGEST BUILDER
OF SIXES BUILDING
THE SIX SUPREME



More than 3 out of every 5 motor car buyers today are choosing sixes. And, of course, the most popular six of all is this new Chevrolet—the Six Supreme! Discriminating people prefer it because of its high quality . . . because of its great value . . . because it's the only low-priced car with all these fine car features!

"You'll be AHEAD with a CHEVROLET!"

PERFECTED
HYDRAULIC BRAKES
85-H.P. VALVE-IN-HEAD
ENGINE
GENUINE KNEE-ACTION*
ALL-SILENT, ALL-STEEL BODIES
SHOCKPROOF STEERING*
TIPTOE-MATIC CLUTCH

*On Master De Luxe models only.

H. S. NEWCOMER & SON, Inc.

EAST MAIN ST.

MT. JOY, PA.

THURSDAY, SEPTEMBER 1st, 1938

MT. JOY BULLETIN

MOUNT JOY, PA.

J. E. SCHROLL, Editor & Propr.



**Visit Our Lot
ON EAST MAIN ST.**

Now's the time to buy a car
for fall or winter

You'll get most for your
money here!

1937 OLDS TOURING SEDAN
1937 CHEV. COUPE. Master Deluxe
1936 DODGE 4-DOOR SEDAN
With Trunk
1936 OLDSMOBILE COACH
With Trunk
1934 CHEV. COACH with Trunk
1933 CHEVROLET SEDAN
1933 PLYMOUTH 4-DOOR SEDAN
1932 CHEVROLET COACH
1931 DODGE 4-DOOR SEDAN
1931 ESSEX COACH
1930 FORD TUDOR
1936 CHEV. PICK-UP, $\frac{1}{2}$ Ton
1934 CHEV. PICK-UP, $\frac{1}{2}$ Ton
1934 FORD PICK-UP, $\frac{1}{2}$ Ton
1931 CHEV. TRUCK. $1\frac{1}{2}$ Ton, 157 in.
Wheelbase
1929 FORD PICK-UP

**H. S. NEWCOMER
& SON, Inc.**
MOUNT JOY, PA.

THURSDAY, OCTOBER 20th, 1938

MT. JOY BULLETIN

MOUNT JOY, PA.

J. E. SCHROLL, Editor & Propr.

SEE THE
NEW 1939
CHEVROLET
AND
OLDSMOBILE
At The
Farm Show

—o—

H. S. Newcomer & Son, Inc.

Mount Joy, Pa.

THURSDAY, OCTOBER 20th, 1938

MT. JOY BULLETIN

MOUNT JOY, PA.

J. E. SCHRÖLL, Editor & Propr.

New CHEVROLET 1939

On
Display
Saturday
Oct. 22

"Observation Car" New
Visibility



CHEVROLET'S FAMOUS
VALVE-IN-HEAD
SIX

PERFECTED VACUUM
GEAR-SHIFT



"The Magic Finger
That Shifts Gears"
A small lever,
located on the
steering column,
enables you to
shift to all gears
swiftly, silently,
effortlessly.
Available on all
models at slight
extra cost.

Here's Big News!

CHEVROLET PRICES GREATLY REDUCED

Come in Saturday

PERFECTED KNEE-ACTION
RIDING SYSTEM
(With Improved Shockproof Steering)
Available on
Master De Luxe
models only.

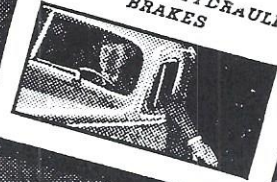


New
Aero-Stream
Styling
New Bodies
by Fisher



See this marvelous new Chevrolet for 1939 . . . The highest quality motor car ever offered in the entire history of low-cost motoring . . . with all these sensational new features making it the outstanding car for all-round satisfaction as well as the biggest buy in motordom. SEE IT—DRIVE IT! BUY A CHEVROLET AND BE SATISFIED.

PERFECTED HYDRAULIC
BRAKES



New Longer Riding-
Base



TIPTOE-
MATIC
CLUTCH



"CHEVROLET'S THE CHOICE"

Again More Quality
AT SUBSTANTIALLY REDUCED PRICES



SEE YOUR LOCAL CHEVROLET DEALER

H. S. NEWCOMER & SON, Inc.

EAST MAIN ST.
MT. JOY, PA.