

See the new Ford bodies at our showrooms

From the new deep radiator to the curving tip of the rear fender, there is an unbroken sweep of line—a flowing grace of contour heretofore thought possible only in an expensive automobile. Now, more than ever, the new Ford, is a “value far above the price.”



CLARENCE S. NEWCOMER

MOUNT JOY, PENNA.



New Beauty for the New Ford

**now on display
at the Show**

NEW RUSTLESS STEEL

NEW DEEPER RADIATOR

NEW ROOMY BODIES

NEW SMALLER WHEELS

NEW LARGER FENDERS

NEW LARGER TIRES

NEW STREAMLINES

NEW COLORS

Fully enclosed self-centering silent 6-brake system

Four Houdaille shock absorbers

Shatterproof windshield glass

55 to 65 miles an hour

Dependable dealer service

CLARENCE S. NEWCOMER

MOUNT JOY, PENNA.

WEDNESDAY, FEBRUARY 12, 1930

MT. JOY BULLETIN

MOUNT JOY, PA.

J. E. SCHROLL, Editor & Pro'r.

Bought New Fords

Mr. John D. Miller, of this place, bought a new sport model Ford and Jacob Brown, also of town, bought a Ford sport roadster from the local dealer, Mr. Clarence S. Newcomer. Both cars were delivered yesterday.

NEW BEAUTY IN THE NEW FORD

Beauty of line and outstanding performance
make the new Ford a "value far
above the price"

The new Ford is a particularly good choice because it
brings you everything you want or need in a motor car.
It leads in SALES because it leads in VALUE.

Features of the New Ford

BEAUTIFUL NEW STREAMLINES
FULLY ENCLOSED FOUR-WHEEL BRAKES
CHOICE OF COLORS
FOUR HOUDAILLE DOUBLE-ACTING HYDRAULIC SHOCK ABSORBERS
TRIPLEX SHATTER-PROOF GLASS WINDSHIELD
BRIGHT RUSTLESS STEEL FOR EXPOSED METAL PARTS
UNUSUALLY LARGE NUMBER OF BALL AND ROLLER BEARINGS
SMOOTHNESS, BALANCE AND SECURITY AT ALL SPEEDS
55 TO 65 AN HOUR
QUICK ACCELERATION
TYPICAL FORD ECONOMY, RELIABILITY AND LONG LIFE
GOOD DEALER SERVICE AFTER YOU BUY THE CAR

Call or telephone for demonstration

\$435 up

(f. o. b. Detroit)



Clarence S. Newcomer
MOUNT JOY, PENNA.

WEDNESDAY, MAY 28, 1930

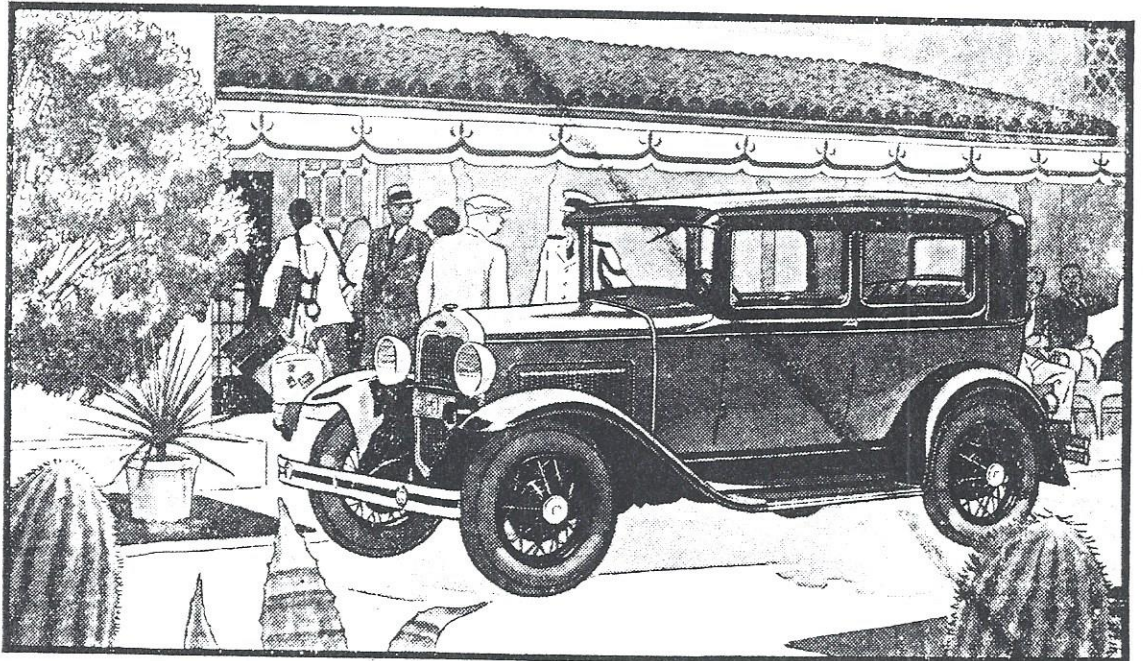
MT. JOY BULLETIN

MOUNT JOY, PA.

J. E. SCHROLL, Editor & Pro'r.

OUTSTANDING FEATURES OF THE NEW FORD

New streamline bodies. Choice of attractive colors. Adjustable front seats in most bodies.
Fully enclosed, silent four-wheel brakes. Four Houdaille double-acting hydraulic shock absorbers.
Bright, enduring Rustless Steel for many exterior metal parts. Chrome silicon alloy valves.
Aluminum pistons. Chrome alloy transmission gears and shafts. Torque-tube drive.
Three-quarter floating rear axle. Extensive use of fine steel forgings and electric welding.
More than twenty ball and roller bearings. Triplex shatter-proof glass windshield.
Five steel-spoke wheels. 55 to 65 miles an hour. Quick acceleration. Ease of control.
Low first cost. Economy of operation. Reliability and long life. Good dealer service.



THE NEW FORD TUDOR SEDAN

Roadster \$135	Coupe \$500		De Luxe Coupe . . . \$550	Convertible Cabriolet \$645
Phaeton \$440	Tudor Sedan . . . \$500		Three-window Fordor Sedan \$625	
Sport Coupe \$530			De Luxe Sedan . . . \$650	Town Sedan . . . \$670

All prices f. o. b. Detroit, plus freight and delivery. Bumpers and spare tire extra, at low cost. Universal Credit Company plan of time payments offers another Ford economy.

FORD MOTOR COMPANY

WEDNESDAY, JUNE 4, 1930

MT. JOY BULLETIN
MOUNT JOY, PA.
J. E. SCHROLL, Editor & Pro'r.

Prices of FORD CARS and TRUCKS Reduced EFFECTIVE JUNE 2

Reductions Range from \$5 to \$25. Following are the new prices for Ford cars and trucks

Standard Coupe	\$495	Pick-up Closed Cab	\$455
Sport Coupe	525	Model A Panel Delivery	570
DeLuxe Coupe	545	DeLuxe Delivery	545
Tudor Sedan	495	Station Wagon	640
Three--window Ford or Sedan	600	Model A Chassis	345
DeLuxe Sedan	640	Model AA Truck Chassis	
Town Sedan	660	131½-inch wheel base	510
Cabriolet	625	Model AA Truck Chassis	
Roadster	435	157-inch wheel base	535
Phaeton	440	Model AA Panel Delivery	780
Pick-up Open Cab	425		

*There has been no change in the Price of the Roadster and Phaeton

All Prices F. O. B. Detroit

Clarence S. Newcomer

MOUNT JOY, PENNA.