

Wednesday, Jan. 6, 1926

MT. JOY BULLETIN

MOUNT JOY, PA.

J. E. SCHROLL, Editor & Pro'r.

Ford

NATIONAL SHOW WEEK
JANUARY 9-16

*Exhibiting the Improved Ford Cars and
Featuring the latest Ford Equipment*

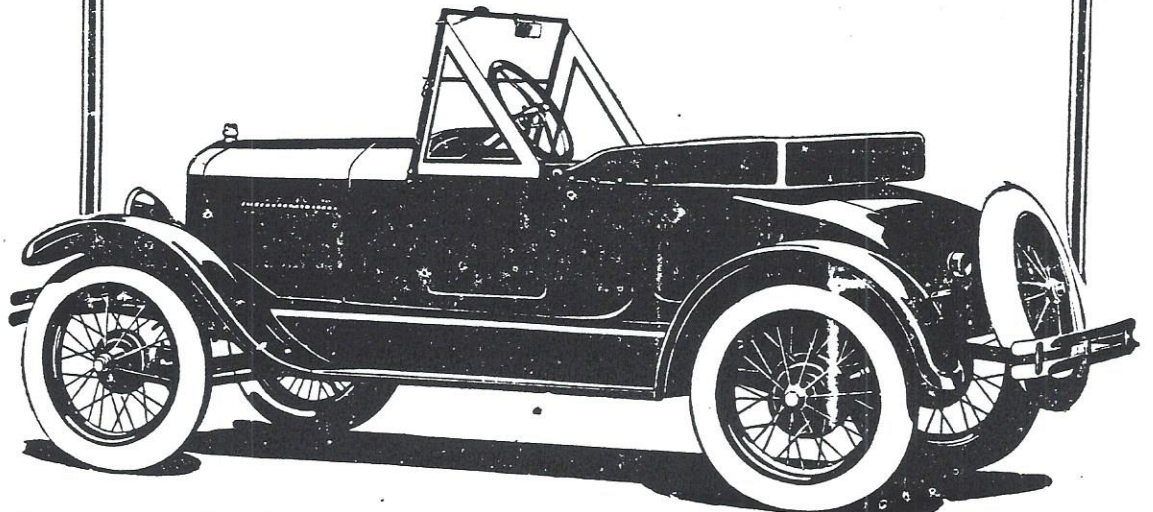
From January 9 to 16, all Ford Dealers will hold a National Show—exhibiting the improved Ford cars and featuring the latest Ford equipment.

This will be the finest display of Ford passenger cars the public has ever seen. It will give you an entirely new conception of the beauty and utility of the various Ford body types. Even if you have already made a careful inspection of the improved Ford cars, you should see this Display—for it is something entirely new.

The Show will begin Saturday morning January 9, and will last until Saturday night, January 16. Be sure to see it!

Sponsored by

Ford Motor Company



Wednesday, June 9, 1926

MT. JOY BULLETIN

MOUNT JOY, PA.

J. E. SCHROLL, Editor & Pro'r.

GOOD VALUES
—IN—
FORD USED CARS

1925 Fordor Sedan

Balloon Tires
Excellent Condition

(2) 1925 Coupes

Balloon Tires; New Paint

1924 Tudor Sedan

Balloon Tires
Perfect Mechanical Condition

1924 Coupe

New Paint, Duco

(2) 1924 Tourings

Excellent Condition
Very Good Values

1923 Touring

With New Paint

(2) 1923 Roadsters

With Slip-on Bodies
Both have New Paint
Good Mechanically

1924 Light Delivery

Panel Body; New Paint
Good Condition

(2) 1921 to 1923

Coupes

Would make good jobs to
put Slip-on Bodies on for
farmer or business man.

Also Lot of Good

Serviceable Cars

of Different Descriptions

At Low Prices for Quick Sale

2 Good Fordson Tractors

H.S. Newcomer & Son

FORD SALES AND SERVICE

MT. JOY, PA.

Wednesday, October 20, 1926

MT. JOY BULLETIN

MOUNT JOY, PA.

J. E. SCHROLL, Editor & Pro'r.

**SPECIAL FALL
CLEAN-UP SALE OF
FORD USED CARS**

1926 Touring Duco Paint

1924 Coupe, Duco Paint

1921 Roadster, Good Paint

1921 Coupe, Good Paint and Rubber

1920 Coupe, Good Paint and Rubber

Also Cheap Starter Tourings and Roadsters.

H.S. Newcomer & Son

FORD SALES AND SERVICE

MT. JOY, PA.