

WEDNESDAY, MARCH 6th, 1935

MT. JOY BULLETIN
MOUNT JOY, PA.
J. E. SCHROLL, Editor & Propr.

Presenting

Two New CHEVROLETS

in the two lowest price ranges

THE NEW STANDARD CHEVROLET

LOWEST-PRICED SIX
UNUSUAL ECONOMY
FLASHY ACCELERATION

23% MORE POWER
for Gateway and Hill-climbing

BIG, ROOMY BODY BY FISHER
SMOOTH, POWERFUL BRAKES

BLUE-FLAME VALVE-IN-HEAD ENGINE

NOW ON DISPLAY

AT OUR

SHOW ROOMS



THE NEW

MASTER DE LUXE CHEVROLET

NEW STREAMLINE STYLING

TURRET TOP BODY BY FISHER

KNEE-ACTION

LONGER WHEELBASE

ROOMIER BODIES

SPEED, POWER, ECONOMY

BLUE-FLAME VALVE-IN-HEAD ENGINE

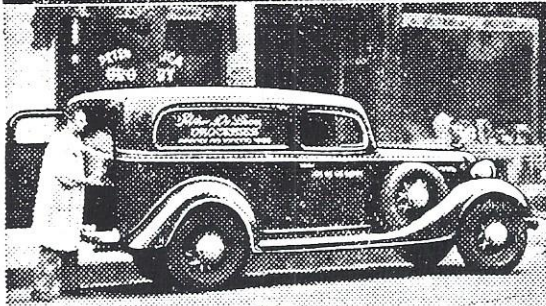
CHOOSE CHEVROLET FOR QUALITY AT LOW COST

H. S. NEWCOMER & SON

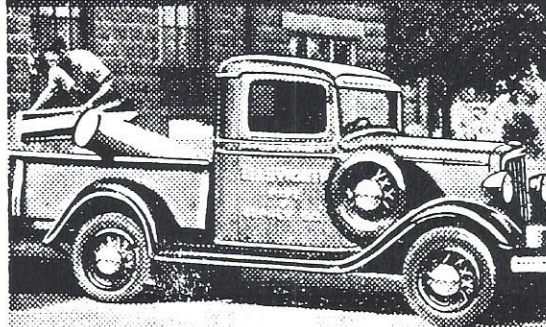
(Incorporated)

MOUNT JOY, PENNA.

Buy them at the WORLD'S LOWEST PRICES Save on operating costs, too!



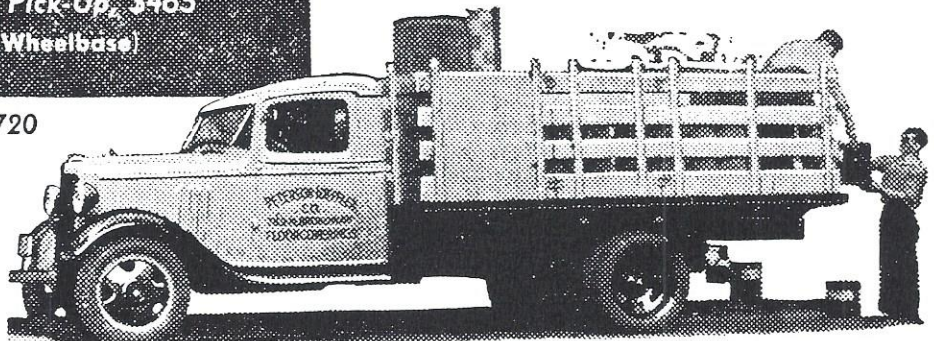
Sedan Delivery, \$515
(107" Wheelbase)



Half-Ton Pick-Up, \$465
(112" Wheelbase)

*1½-Ton Stake, \$720
(157" Wheelbase)

Above are list prices of commercial cars at Flint, Michigan. Special equipments extra. *Dual wheels and tires \$20 extra. Prices subject to change without notice.



The most important consideration of all, in buying and operating trucks, is *economy*. Economy of *first cost* and *operating cost*. And the most economical trucks on the market today are—*Chevrolet Trucks*. They sell at the world's lowest prices. They give maximum operating economy, too, because they're powered by valve-in-head six-cylinder engines. And they will keep on saving you money, day after day and year after year, because Chevrolet builds so much extra quality and rugged reliability into them that their service is as carefree as their prices and operating costs are low. See your Chevrolet dealer and get the right truck for your job at the *world's lowest prices*.

CHEVROLET MOTOR CO., DETROIT, MICH.

Compare Chevrolet's low delivered prices and easy G. M. A. C. terms. A General Motors Value

CHEVROLET TRUCKS

H. S. NEWCOMER & SON

(Incorporated)

East Main Street

MOUNT JOY, PENNA.

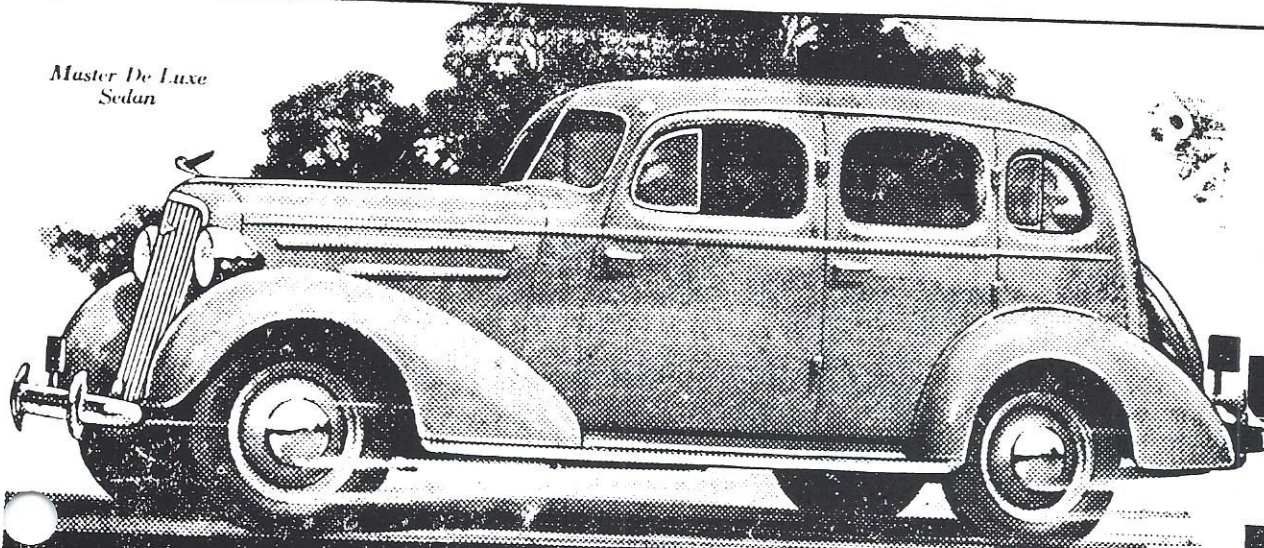
WEDNESDAY, MAY 29th, 1935

MT. JOY BULLETIN

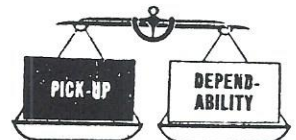
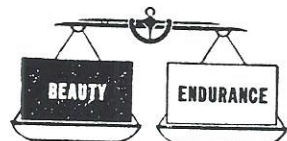
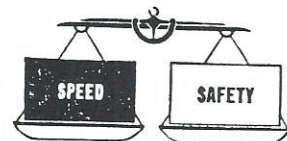
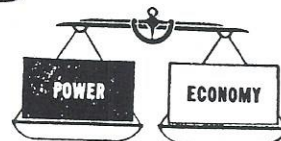
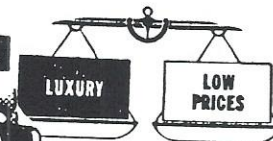
MOUNT JOY, PA.

J. E. SCHROLL, Editor & Propr.

Master De Luxe Sedan



Weigh
all factors
•
judge
for yourself



**IT'S THE
MOST FINELY BALANCED
LOW-PRICED CAR
EVER BUILT**

CHEVROLET

THE new Master De Luxe Chevrolet brings you a perfect combination of the most desired motor car advantages of the day. Yet it sells at *much lower prices* and gives *much greater operating economy* than any other motor car you would think of comparing with it! See this car—drive it—at your earliest convenience.

CHEVROLET MOTOR COMPANY
DETROIT, MICHIGAN

Compare Chevrolet's low delivered prices and easy G. M. A. C. terms. A General Motors Value

DEALER ADVERTISEMENT

CHOOSE CHEVROLET FOR QUALITY AT LOW COST

Master De Luxe

CHEVROLET

H. S. NEWCOMER & SON

East Main Street

(Incorporated)

MOUNT JOY, PENNA.